

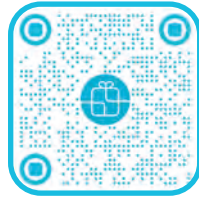
# EVERYDAY COLLECTION 2025





Konsequent nachhaltig präsentiert sich die neue ZOEWIE Kollektion.

Mit ZOEWIE Produkten nehmen wir direkten Einfluss auf das Konsumverhalten Ihrer Kunden:

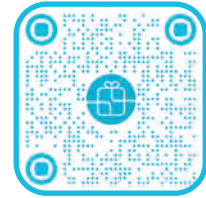


100% Zukunft schenken

<https://zoewie.com/unternehmen/ueber-uns/>

Strictly sustainable is how the new ZOEWIE collection presents itself.

With ZOEWIE products, we directly influence the consumption behavior of your customers:




Give 100% future

<https://zoewie.en/company/about-us/>

INHALTSVERZEICHNIS | CONTENT

Silphiepapier   Silphie Paper   Taschen   Bags .....	6-7
Graspapier   Grass Paper   Taschen   Bags .....	8-11
Pure Nature   Urban Nature   Taschen   Bags .....	12-19
Effekt-Papier   Effect paper   2-Color   Kraft Brown   Taschen   Bags .....	20-29
Hochzeit   Wedding   Muttertag   Mother's Day   Valentin   Taschen   Bags .....	30-33
Ostern   Easter   Taschen   Bags .....	34-37
Premium-Papier   Premium paper   Taschen   Bags .....	38-49
Kinder   Kids   Kommunion   Konfirmation   Taschen   Bags .....	50-61
Prisma   Transparent Film .....	62
Taschen   Bags .....	63-69
Röllchen Sortimente   Assortments.....	70-77
Displays   Display equipments .....	77-78

LEGENDE PIKTOGRAMME | LEGEND PICTOGRAPH

 Kurzrollen Sortiment  
Consumer rolls, assorted designs

★ Nur in begrenzter Stückzahl verfügbar. Bitte fragen Sie an!  
These items are available in limited quantities. Please inquire.

 Artikel mit Euro-Haken.  
Article with euro hook.

 PG | PC  
Preisgruppe  
Price category

An unseren beiden deutschen Standorten in Neustadt und Sonneberg produzieren wir 100% klimaneutral. Einen beträchtigen Anteil unseres Stromverbrauches decken wir mit eigenen Photovoltaik-Anlagen und sparen so jährlich 380 Tonnen CO<sub>2</sub> ein.



At our two German sites in Neustadt and Sonneberg, we produce 100% climate-neutral. We cover a considerable share of our electricity consumption with our own photovoltaic systems and save 380 tonnes of CO<sub>2</sub> per year.

Die Herstellung unserer Blauen Engel Papiere spart circa 70% Wasser und 60% Energie gegenüber Frischfaserpapieren. Der Blaue Engel garantiert zudem, dass dem Papier bei der Herstellung keine schädlichen Chemikalien oder optischen Aufheller zugesetzt werden.



[www.blauer-engel.de/uz14](http://www.blauer-engel.de/uz14)

The Blue Angel label paper saves about 70% water and 60% energy compared to virgin fiber paper. The Blue Angel also guarantees that no harmful chemicals or optical brighteners are added to the paper during production.

Unsere zertifizierten Geschenkpapiere und Geschenktaschen sind durch das unabhängige Zertifizierungssystem des FSC® für holz- und papierbasierende Produkte nachweislich aus ökologisch, ökonomisch und sozial nachhaltiger Forstwirtschaft.



Das Zeichen für verantwortungsvolle Waldwirtschaft

FSC®- Produkte nur auf Anfrage erhältlich.  
FSC® products only available on request.

Certified by the independent FSC® certification system for wood- and paper-based products, our certified gift-wrapping papers and gift bags are verifiably from ecologically, economically, and socially sustainable forestry.

Zur Sicherstellung einer kontinuierlichen Verbesserung der nachhaltigen Waldbewirtschaftung, handeln wir in der Produktion nach den Regeln zur Produktketten-Zertifizierung (Chain-of-Custody).



Förderung nachhaltiger Waldbewirtschaftung  
www.pefc.de

Ensuring continuous improvement of sustainable forest management, we act following the rules for product chain certification (Chain-of-Custody) in production.

Unser Qualitätsmanagementsystem ist DIN ISO 9001 zertifiziert, weil höchste Qualität in allen Bereichen unser Standard ist. Das schafft Transparenz und ein stetiges Optimieren der internen Prozesse und Abläufe.



We have DIN ISO 9001 certification for our quality management system because the highest quality is our standard in all areas. This provides transparency and continuous optimization of internal processes and procedures.

Die Vorteile einer globalisierten Welt gehen nicht selten auf Kosten der Nachhaltigkeit, der Sozialstandards und der Transparenz. Ein schonender Ressourceneinsatz ist unser Ziel.



The benefits of a globalized world often come at the expense of sustainability, social standards, and transparency. Careful use of resources is our goal.



Der Erfolg von pure green zeigt uns, dass wir gemeinsam auf dem richtigen Weg sind. Unsere Rohpapiere erfüllen alle Erwartungen an ein konsequent nachhaltiges Sortiment - ohne Kompromisse.

Our success with pure green shows us that together we are on the right track. Without compromise, our base papers meet all the expectations of a consistently sustainable product range.

---

## SILPHIE PAPIER | SILPHIE PAPER

Papier aus Silphie-Fasern hat eine einzigartige und natürliche Textur. Die Pflanze ist robust und wächst schnell nach. Der Anbau erfolgt auf landwirtschaftlich weniger ergiebigen Böden. Kurze Transportwege reduzieren den ökologischen Fußabdruck erheblich.

Paper made from Silphia fibres has a unique and natural texture. The plant is robust and grows back quickly. It is grown on agriculturally less productive soils. Short transport routes significantly reduce the ecological footprint.

---

## GRASPAPIER | GRASS PAPER

Graspapier besteht zu mindestens 30% aus Gras der heimischen Ausgleichsflächen. Gras wächst sehr schnell und kann mehrmals im Jahr geerntet werden. Kurze Transportwege minimieren den ökologischen Fußabdruck.

Grass paper consists of at least 30% grass from local compensation areas. Grass grows very quickly and can be harvested several times a year. Short transport routes minimise the ecological footprint.

---

## RECYCLING PAPIER | RECYCLED PAPER

Unsere Recyclingpapiere vereinen Stil und Umweltbewusstsein. Sie sind zu 100% aus Altpapier hergestellt und tragen den **BLAUEN ENGEL**. Der **BLAUE ENGEL** ist das weltweit erste Umweltzeichen der Bundesregierung und kennzeichnet Produkte, die die höchsten Umweltstandards erfüllen.

Our recycled papers combine style and environmental awareness. They are made from 100% recycled paper and bear the **BLUE ANGEL**. The **BLUE ANGEL** is the world's first eco-label from the German government and identifies products that fulfil the highest environmental standards.



# GREEN NATURE

Klare Designs auf Papier mit Naturfasern schaffen eine Symbiose zwischen Schenken und Nachhaltigkeit.

Clear designs on paper with natural fibres create a symbiosis between giving and sustainability.





Papier | Paper:

ca. 70g/m<sup>2</sup> | approx. 70gsm

Silphiepapier (70% Altpapier + 30% Silphie)  
 Silphie paper (70% recycled paper + 30% silphie)



1,5m x 70cm

Pappeinlage | stiffener

Art.-Nr.: 33053 545213

EAN VE: 4058653 201943 (VE 25)



**100% Folienfrei**  
 (+ 10cm Papier extra)

**100% Foil-free**  
 (+ 10cm paper extra)



4 058653 101946



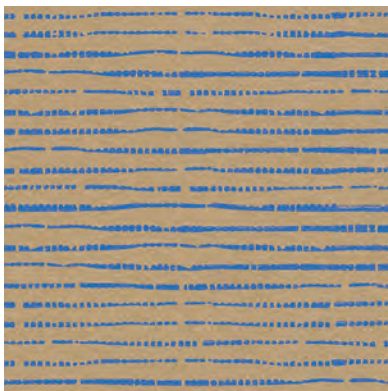
Design 54.0848.1



Design54.0623.1



Design 54.1210.1



Design 54.0890.2



Design 54.0848.2

## EUCALYPTUS

2er Set | set of 2 bags:

115g/m<sup>2</sup> | 115gsm | FSC®

Silphiepapier, Papierkordel  
 Silphie paper, paper cord

PG | PC 2



Midi | medium

B190 x T080 x H210mm

Art.-Nr.: 70010 16019

EAN VE: 4068136 003230 (VE 10)



4 068136 003230



## PURPLE ORCHID

Taschen | Gift bags:

150g/m<sup>2</sup> | 150gsm

Zuckerrohrpapier, Papierkordel  
Sugarcane paper, paper cord

PG | PC 3



Maxi | large

B220 x T100 x H310mm

Art.-Nr.: 70010 12723

EAN VE: 4068136 001045 (VE 10)



4 068136 001038

Midi | medium

B180 x T080 x H240mm

Art.-Nr.: 70010 11723

EAN VE: 4068136 001014 (VE 10)



4 068136 001007



## CELEBRATION TIME

Taschen | Gift bags:

150g/m<sup>2</sup> | 150gsm

Zuckerrohrpapier, Papierkordel  
Sugarcane paper, paper cord

PG | PC 3



Flasche | bottle

B100 x T100 x H360mm

Art.-Nr.: 70010 13722

EAN VE: 4068136 000987 (VE 10)



4 068136 000970

Maxi | large

B220 x T100 x H310mm

Art.-Nr.: 70010 12722

EAN VE: 4068136 000956 (VE 10)



4 068136 000949

Midi | medium

B180 x T080 x H240mm

Art.-Nr.: 70010 11722

EAN VE: 4068136 000925 (VE 10)



4 068136 000918





## FLOWER MIX

Taschen | Gift bags:

120g/m<sup>2</sup> | 120gsm

Graspapier, Baumwollkordel  
Grass paper, cotton cord

PG | PC 2



Midi | medium

B200 x T090 x H230mm

Art.-Nr.: 70010 11724

EAN VE: 4068136 001076 (VE 10)



4 068136 001069

## JUST STRIPES\*

Taschen | Gift bags:

120g/m<sup>2</sup> | 120gsm

Graspapier, Baumwollkordel  
Grass paper, cotton cord

PG | PC 2



Maxi | large

B240 x T090 x H350mm

Art.-Nr.: 70010 12725

EAN VE: 4068136 001137 (VE 10)



4 068136 001120

Midi | medium

B200 x T090 x H230mm

Art.-Nr.: 70010 11725

EAN VE: 4068136 001106 (VE 10)



4 068136 001090



## AWAKING NATURE

Einfache Designs in natürlichen Farben schaffen Einklang zwischen Schenken und Natürlichkeit.

Simple designs in natural colours create a sense of harmony between gift-giving and that closer-to-nature-feeling.





**Papier | Paper:**

ca. 70g/m<sup>2</sup> | approx. 70gsm

Graspapier (70% Altpapier + 30% Gras)

Grass paper (70% recycled paper + 30% grass)



1,5m x 70cm

Pappeinlage | stiffener

Art.-Nr.: 33053 545237

EAN VE: 4058653 201660 (VE 25)



4 058653 101663



**100% Folienfrei**  
(+ 10cm Papier extra)

**100% Foil-free**  
(+ 10cm paper extra)



Design 54.1209.1



Design 54.1207.1



Design 44.0405.2



Design 44.0700.1



Design 44.0716.1

## SUMMER BREEZE

**Taschen | Gift bags:**

120g/m<sup>2</sup> | 120gsm | FSC®

Graspapier, Baumwollkordel

Grass paper, cotton cord



PG | PC 2



**Midi | medium**

B200 x T090 x H230mm

Art.-Nr.: 70010 11743

EAN VE: 4068136 002660 (VE 10)



4 068136 002653



# PURE NATURE

Natur und Zukunft liegen uns gleichermaßen am Herzen.

Nature and the future are equally close to our heart.



Papier | Paper:

ca. 70g/m<sup>2</sup> | approx. 70gsm

100% Altpapier | 100% recycled paper

100% Farben auf Wasserbasis | 100% water-based inks



2m x 70cm

Pappeinlage | stiffener

Art.-Nr.: 33053 525219

EAN VE: 4058653 201615 (VE 25)



[www.blauer-engel.de/uz14b](http://www.blauer-engel.de/uz14b)

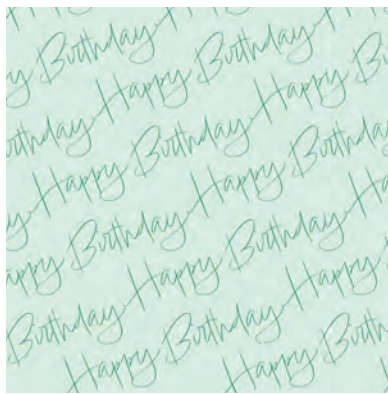


**100% Folienfrei**  
(+ 10cm Papier extra)

**100% Foil-free**  
(+ 10cm paper extra)



Design 32.9558.1



Design 52.0708.2



Design 52.0652.1



Design 52.0393.1



Design 52.0676.2

## FLOWER BOUQUET

Taschen | Gift bags:

120g/m<sup>2</sup> | 120gsm

Recyclingpapier, Baumwollkordel  
Recycling paper, cotton cord

PG | PC 2



Midi | medium

B200 x T090 x H230mm

Art.-Nr.: 70010 11727

EAN VE: 4068136 001199 (VE 10)



## LEMON FRESH

Taschen | Gift bags:

120g/m<sup>2</sup> | 120gsm

Recyclingpapier, Baumwollkordel  
Recycling paper, cotton cord

PG | PC 2



Midi | medium

B200 x T090 x H230mm

Art.-Nr.: 70010 11726

EAN VE: 4068136 001168 (VE 10)



## LET'S DANCE\*

Taschen | Gift bags:

120g/m<sup>2</sup> | 120gsm

Recyclingpapier, Papierkordel  
Recycling paper, paper cord

PG | PC 2

\*



Midi | medium

B180 x T090 x H230mm

Art.-Nr.: 70010 11696

EAN VE: 4058652 117962 (VE 10)



4 058652 116965

## PURE NATURE\*

Taschen | Gift bags:

120g/m<sup>2</sup> | 120gsm

Recyclingpapier, Papierkordel  
Recycling paper, paper cord

PG | PC 2

\*



Midi | medium

B180 x T090 x H230mm

Art.-Nr.: 70010 11695

EAN VE: 4058652 117955 (VE 10)



4 058652 116958



## URBAN NATURE

Braunes Recyclingpapier mit lebhaften Farben verknüpft die Essenz der Moderne mit Elementen der Natur.

Brown recycled paper with vibrant colours links the essence of modernity with elements of nature.







Papier | Paper:

ca. 60g/m<sup>2</sup> | approx. 60gsm

Recyclingpapier braun  
Recycled paper brown



2m x 70cm

Pappeinlage | stiffener

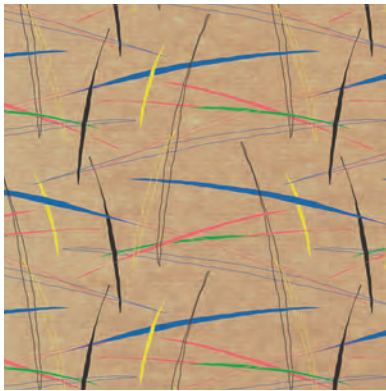
Art.-Nr.: 33053 535205

EAN VE: 4058653 201622 (VE 25)



**100% Folienfrei**  
(+ 10cm Papier extra)

**100% Foil-free**  
(+ 10cm paper extra)



Design 59.0864.2



Design 49.0493.2



Design 49.0718.1



Design 59.0874.2



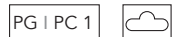
Design 59.0631.2

## LOVELY RAINBOW

Taschen | Gift bags:

200g/m<sup>2</sup> | 200gsm | FSC®

Mattkaschierung, Kordel, Ösen  
Matt finish, cord, eyelets



Maxi | large

B260 x T135 x H335mm

Art.-Nr.: 70010 12739

EAN VE: 4068136 002608 (VE 10)



4 068136 002592

Midi | medium

B170 x T092 x H225mm

Art.-Nr.: 70010 11739

EAN VE: 4068136 002639 (VE 10)



4 068136 002622

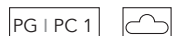


## BROWN KRAFT UNI

Taschen | Gift bags:

180g/m<sup>2</sup> | 180gsm

Kraftpapier, Kordel, Ösen  
Kraft paper, cord, eyelets



Flasche | bottle

B105 x T105 x H360mm

Art.-Nr.: 70110 23312

EAN VE: 4058652 234126 (VE 10)



4 058652 233129

Midi | medium

B170 x T092 x H225mm

Art.-Nr.: 70110 21312

EAN VE: 4058652 214128 (VE 10)



4 058652 213121

Mini | small

B150 x T055 x H150mm

Art.-Nr.: 70110 20312

EAN VE: 4058652 204129 (VE 10)



4 058652 203122



## PARTY BEAR

Taschen | Gift bags:

160g/m<sup>2</sup> | 160gsm | FSC®

Kraftpapier braun, Kordel, Ösen  
Kraft paper brown, cord, eyelets

PG | PC 1



Midi | medium

B170 x T092 x H225mm

Art.-Nr.: 70010 11744

EAN VE: 4068136 003087 (VE 10)



4 068136 003070

## KRAFT BROWN



Papier | Paper:

ca. 60g/m<sup>2</sup> | approx. 60gsm

Recyclingpapier braun  
Recycled paper brown



5m x 70cm

Art.-Nr.: 33246 797163

EAN VE: 4058653 200281 (VE 50)



4 058653 100284



5m x 1m

Art.-Nr.: 33246 595173

EAN VE: 4058653 201967 (VE 25)



4 058653 100277



Papier | Paper:

ca. 80g/m<sup>2</sup> | approx. 80gsm

Recyclingpapier braun, Schaumbeflockung  
Recycled paper brown, foam flock



1,5m x 70cm

34mm Hülse | core

Art.-Nr.: 33052 131115

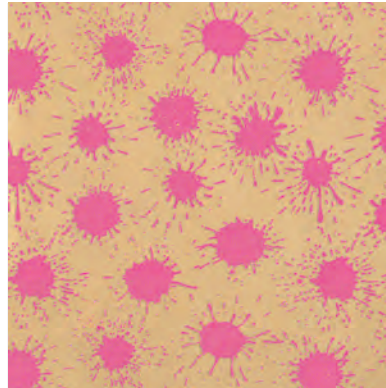
EAN VE: 4058653 201066 (VE 25)



4 058653 101069



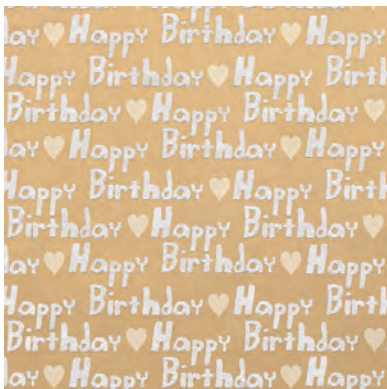
Design 49.0067.2



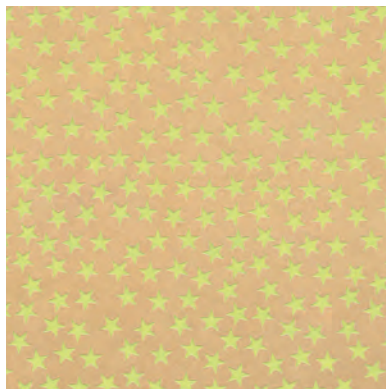
Design 29.9185.2



Design 29.9192.2



Design 49.0068.1



Design 49.9768.2

Beispielabbildungen | Sample image



## ECO FUN

Fröhliche Motive in leuchtenden Farben mit haptischer Veredelung **MADE IN GERMANY**.

Cheerful motifs in bright colours with a haptic finish **MADE IN GERMANY**.





Papier | Paper:

ca. 60g/m<sup>2</sup> | approx. 60gsm

Kraftpapier braun, Heißfolie, Prägung  
Kraft paper brown, hotfoil, embossing



1,5m x 70cm

34mm Hülse | core

Art.-Nr.: 33062 989101

EAN VE: 4058653 200984 (VE 25)



4 058653 100987



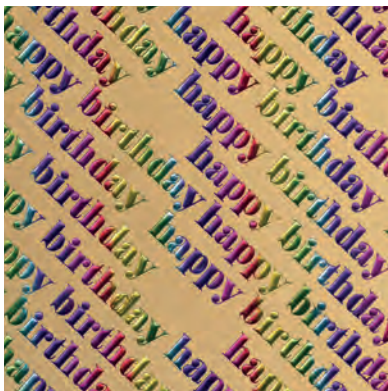
Design 460



Design 462



Design 451



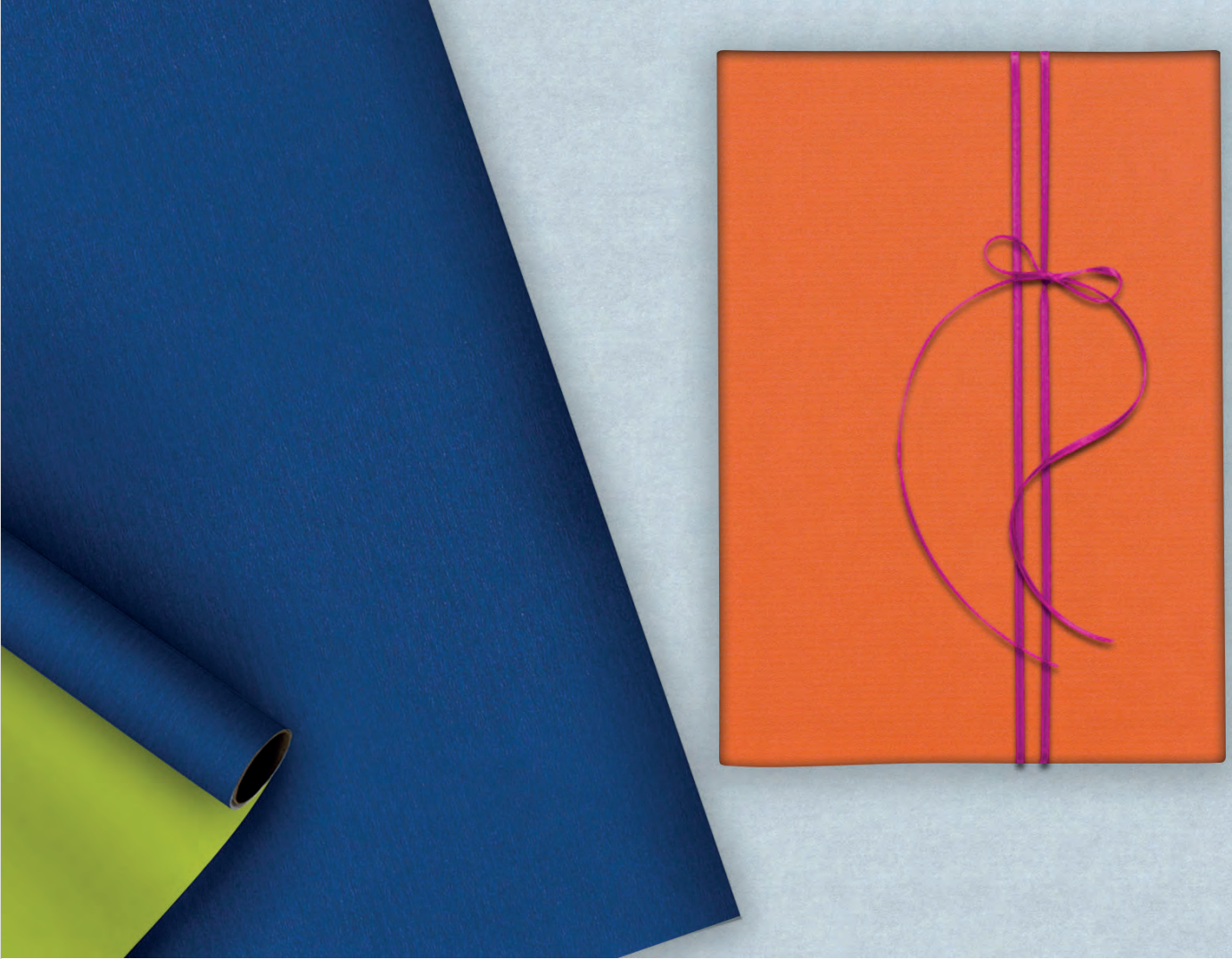
Design 464

# RAINBOW

Schlichte Designs und Regenbogenheißfolie bringen Eleganz auf braunes Kraftpapier.

Simple designs and rainbow hot foil add a touch of elegance to brown kraft paper.





## 2-COLOR

Der Klassiker unter den Kraftpapieren - mit doppel-seitigem Nutzen.

The classic among kraft papers - dual-purpose.





**Papier | Paper:**

ca. 60g/m<sup>2</sup> | approx. 60gsm

Kraftpapier weiß, gerippt, beidseitig bedruckt, umgelegte Ecke  
 Kraft paper white, ribbed, double side print, folded corner shows  
 colour on reverse



**Frühling | Spring**

2m x 70cm

Pappeinlage | stiffener

Art.-Nr.: 33753 838107

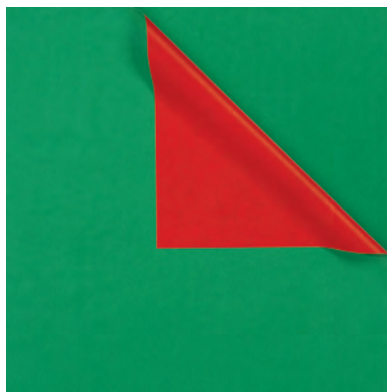
EAN VE: 4058653 200649 (VE 25)



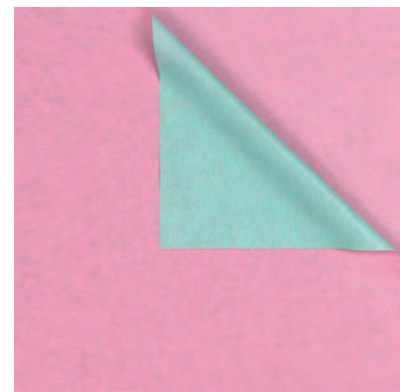
4 058653 100642



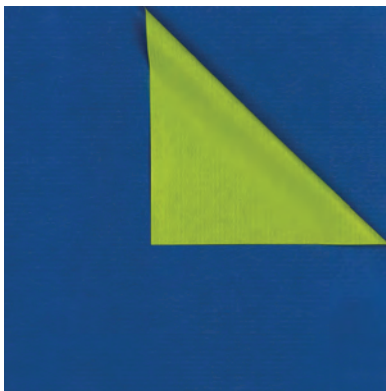
Design 33.1642



Design 33.1682



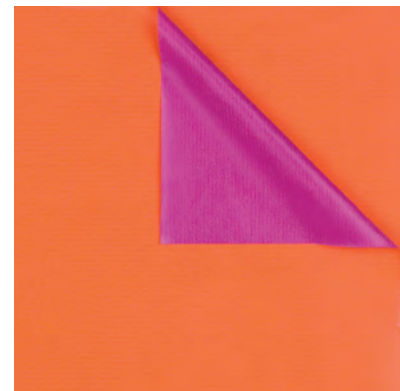
Design 93.1674



Design 03.1677



Design 73.1670



Design 03.1678



## FOIL FINESSE

Goldene Heißfolie **MADE IN GERMANY** zaubert eleganten Glanz auf Geschenkpapier.

Golden hot foil **MADE IN GERMANY** conjures up an elegant lustre on wrapping paper.







Papier | Paper:

ca. 80g/m<sup>2</sup> | approx. 80gsm

Gestrichenes Geschenkpapier, Heißfolie  
Coated gift wrap, hotfoil



1,5m x 70cm

40mm Hülse | core

Art.-Nr.: 33013 5A5103

EAN VE: 4058653 201974 (VE 30)



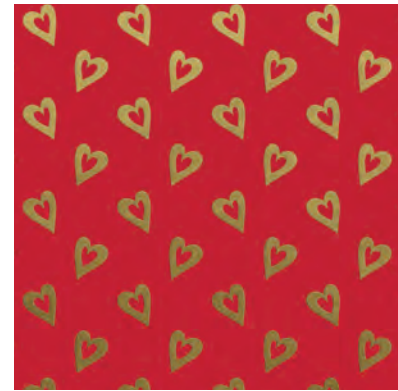
4 058653 101977



Design 5A.9157.3



Design 5A.1364.2



Design 5A.1365.2



Design 5A.1366.2



## TOUCH OF GOLD

Glamuröser Touch durch eine Veredelung mit goldener Metallic-Reliefpaste [MADE IN GERMANY](#).

A finish with golden metallic relief paste provides the glamorous touch [MADE IN GERMANY](#).





Papier | Paper:

ca. 80g/m<sup>2</sup> | approx. 80gsm

Recyclingpapier, Metallic-Relieffarbe  
Recycled paper, metallic relief color



1,5m x 70cm

34mm Hülse | core

Art.-Nr.: 33052 303253

EAN VE: 4058653 201653 (VE 25)



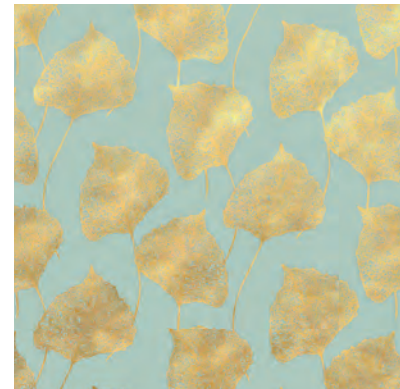
[www.blauer-engel.de/uz14b](http://www.blauer-engel.de/uz14b)



Design 32.0005.2



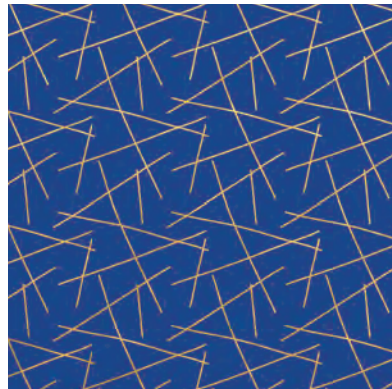
Design 32.0005.3



Design 32.0065.1



Design 42.0184.2



Design 42.0184.3

## TOUCH OF GOLD

### Taschen | Gift bags:

200g/m<sup>2</sup> | 200gsm, FSC®

Mattkaschierung, Goldfolie, Kordel,  
Ösen  
Matt finish gold foil, cord, eyelets

PG | PC 2



### Flasche | bottle

B105 x T105 x H360mm

Art.-Nr.: 70010 13694

EAN VE: 4068136 000772 (VE 10)



4 068136 000765



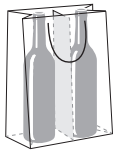
## TOUCH OF GOLD

### Taschen | Gift bags:

180g/m<sup>2</sup> | 180gsm

Ungestrichenes, gefärbtes Papier mit Goldfolie,  
Kordel, Ösen  
Uncoated dyed paper with gold foil, cord,  
eyelets

PG | PC 2



### Doppel-Flasche | double bottle

blau | blue

B200 x T090 x H335mm

Art.-Nr.: 70010 13592

EAN VE: 4058652 134921 (VE 10)



4 058652 135928

### Doppel-Flasche | double bottle

schwarz | black

B200 x T090 x H335mm

Art.-Nr.: 70010 13669

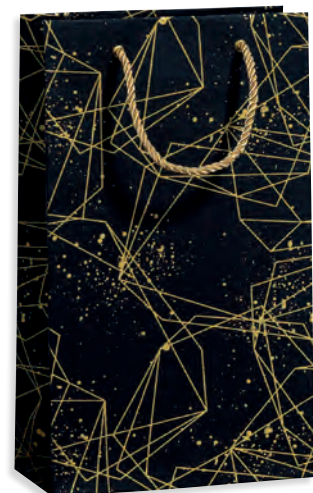
EAN VE: 4058652 137694 (VE 10)



4 058652 136697



FSC®





Papier | Paper:

ca. 80g/m<sup>2</sup> | approx. 80gsm

Recyclingpapier, Pearl-Glimmer  
Recycled paper, pearl glimmer



1,5m x 70cm

34mm Hülse | core

Art.-Nr.: 33053 171171

EAN VE: 4058653 201486 (VE 25)



[www.blauer-engel.de/uz14b](http://www.blauer-engel.de/uz14b)



Design 17.1704



Design 17.1701



Design 17.1702



Design 17.1700



Design 17.1703

# SHIMMERING PEARLS

Elegante Uni-Farben mit schimmerndem Pearlglimmer  
**MADE IN GERMANY** schaffen Wertigkeit.

Elegant uni colours with shimmering pearl glimmer  
**MADE IN GERMANY** represent high-quality.





## ALL ABOUT LOVE



Liebevolle, elegante Motive mit glänzenden Details und Prägungen verbreiten Romantik pur.

Lovely, elegant motifs with shiny details and embossing exude pure romance.





**Papier | Paper:**

ca. 75g/m<sup>2</sup> | approx. 75gsm

Kraftpapier weiß, Heißfolie, Prägung  
Kraft paper white, hotfoil, embossing



1,5m x 70cm

34mm Hülse | core

Art.-Nr.: 33572 404135

EAN VE: 4058653 200595 (VE 20)



Design 321



Design 330



Design 328



Design 331

Beispielabbildungen | Sample image

## WEDDING DAY

**Taschen | Gift bags:**

200g/m<sup>2</sup> | 200gsm | FSC®

Mattkaschierung, Heißfolie  
Kordel, Ösen  
Matt finish, hotfoil, cord, eyelets



\*



**Maxi | large**

B260 x T135 x H335mm

Art.-Nr.: 70010 12719

EAN VE: 4068136 000680 (VE 10)



4 068136 000673

**Midi | medium**

B170 x T092 x H225mm

Art.-Nr.: 70010 11719

EAN VE: 4068136 000659 (VE 10)



4 068136 000642

## CELEBRATING LOVE\*

### Taschen | Gift bags:

190g/m<sup>2</sup> | 190gsm

Gestrichenes Papier, Heißfolie,  
Prägung, Satinband  
Coated paper, hotfoil,  
embossing, satin ribbon

PG | PC 2



\*



### Flasche | bottle

B110 x T100 x H380mm

Art.-Nr.: 70010 13646

EAN VE: 4058652 137465 (VE 10)



4 058652 136468



## MR & MRS\* | WEDDING CAR\*

### Taschen | Gift bags:

200g/m<sup>2</sup> | 200gsm

Kraftpapier, Heißfolie, Prägung,  
Satinband, Ösen  
Kraft paper, hotfoil, embossing,  
satin ribbon, eyelets

PG | PC 1



\*

### MR & MRS\* | Maxi | large

B330 x T120 x H330mm

Art.-Nr.: 70010 12607

EAN VE: 4058652 127077 (VE 10)



4 058652 126070

### WEDDING CAR\* | Mini | small

B150 x T055 x H150mm

Art.-Nr.: 70010 10606

EAN VE: 4058652 107062 (VE 10)



4 058652 106065







Papier | Paper:

ca. 80g/m<sup>2</sup> | approx. 80gsm

Gestrichenes Geschenkpapier | Coated gift wrap



2m x 70cm

40mm Hülse | core

Art.-Nr.: 33073 3A3243

EAN VE: 4058653 201325 (VE 20)



4 058653 101328



Design 4A.0464.2



Design 5A.0623.2



Design 2A.9135.1

## LOVE | LOVE

Taschen | Gift bags:

200g/m<sup>2</sup> | 200gsm

Mattkaschierung, Satinband, Ösen  
Matt finish, satin ribbon, eyelets

PG | PC 1



Maxi | large

B260 x T135 x H335mm

Art.-Nr.: 70010 12683

EAN VE: 4058652 127831 (VE 10)



4 058652 126834

Midi | medium

B170 x T092 x H225mm

Art.-Nr.: 70010 11745

EAN VE: 4068136 003117 (VE 10)



4 068136 003100

FSC®



Papier | Paper:

ca. 80g/m<sup>2</sup> | approx. 80gsm

Gestrichenes Geschenkpapier | Coated gift wrap



2m x 70cm

40mm Hülse | core

Art.-Nr.: 33073 5A5225

EAN VE: 4058653 200953 (VE 20)



4 058653 100956



Design 5A.1189.1



Design 5A.0792.1



Design 4A.0447.2



# PRIMAVERA

Frühling und österliche Motive zeigen, wie schön die Osterzeit ist.

Spring and Easter motifs reflect the beauty of the Easter season.

## WHITE BUNNIES | EI EI EI\*



### Taschen | Gift bags:

200g/m<sup>2</sup> | 200gsm | FSC®

Mattkaschierung, UV-Lack, Prägung,  
Papierkordel  
Matt finish, UV varnish, embossing,  
paper cord

PG | PC 2

### WHITE BUNNIES | Mini | small

B180 x T120 x H130mm

Art.-Nr.: 70010 10691

EAN VE: 4068136 002394 (VE 10)



4 068136 002387

200g/m<sup>2</sup> | 200gsm

Mattkaschierung, Hotfoil-Print,  
Papierkordel  
Matt finish, hotfoil print, paper cord

PG | PC 2 \*

### EI EI EI\* | Mini | small

B180 x T120 x H130mm

Art.-Nr.: 70010 10690

EAN VE: 4068136 000208 (VE 10)



4 068136 000192

## CHICKEN DANCE | HAPPY EASTER | RABBIT GANG\*



### Taschen | Gift bags:

200g/m<sup>2</sup> | 200gsm | FSC®

Mattkaschierung, Papierkordel  
Matt finish, twisted paper cord

PG | PC 2

### CHICKEN DANCE | Mini | small

B180 x T120 x H130mm

Art.-Nr.: 70010 10693

EAN VE: 4068136 002547 (VE 10)



4 068136 002530

### HAPPY EASTER | Mini | small

B180 x T120 x H130mm

Art.-Nr.: 70010 10692

EAN VE: 4068136 002424 (VE 10)



4 068136 002417

### RABBIT GANG\* | Mini | small

B180 x T120 x H130mm

Art.-Nr.: 70010 10689

EAN VE: 4068136 100178 (VE 10)




4 068136 000161

## COOL BUNNY | FLOWER BUNNY\*

Taschen | Gift bags:

200g/m<sup>2</sup> | 200gsm | FSC®

Mattkaschierung, Heißfolie, Kordel, Ösen  
Matt finish, hotfoi, cord, eyelets

PG | PC 2 


**COOL BUNNY | Midi | medium**  
B170 x T092 x H225mm  
Art.-Nr.: 70010 11736  
EAN VE: 4068136 002486 (VE 10)



Taschen | Gift bags:

160g/m<sup>2</sup> | 160gsm | FSC®

Kraftpapier braun, Heißfolie, Kordel, Ösen  
Kraft paper brown, hotfoil, cord, eyelets

PG | PC 2  \*

**FLOWER BUNNY\* | Midi | medium**  
B170 x T092 x H225mm  
Art.-Nr.: 70010 11709  
EAN VE: 4068136 000055 (VE 10)




## CUTE BUNNY | EASTER BASKET

Taschen | Gift bags:

200g/m<sup>2</sup> | 200gsm | FSC®

Mattkaschierung, Kordel, Ösen  
Matt finish, cord, eyelets

PG | PC 1 

**CUTE BUNNY | Midi | medium**  
B170 x T092 x H225mm  
Art.-Nr.: 70010 11737  
EAN VE: 4068136 002578 (VE 10)



**EASTER BASKET | Midi | medium**  
B170 x T092 x H225mm  
Art.-Nr.: 70010 11735  
EAN VE: 4068136 002455 (VE 10)





FSC®



Taschen | Gift bags:

120g/m<sup>2</sup> | 120gsm

Recyclingpapier, Baumwollkordel  
Recycling paper, cotton cord

PG | PC 2



**SPRING FLOWERS**

Midi | medium

B200 x T090 x H230mm

Art.-Nr.: 70010 11738

EAN VE: 4068136 002516 (VE 10)



4 068136 002509

**HAPPY VIBES | 2er Set | set of 2 bags:**

180g/m<sup>2</sup> | 180gsm

Kraftpapier weiß, Papierkordel  
Kraft paper white, paper cord



**Set**

B110 x T060 x H150mm

Art.-Nr.: 70010 16016

EAN VE: 4058652 161163 (VE 10 Sets)



4 058652 160166

FUNNY BUNNIES\* | SPRING TIME



Taschen | Gift bags:

200g/m<sup>2</sup> | 200gsm | FSC®

Mattkaschierung, Kordel, Ösen  
Matt finish, cord, eyelets

PG | PC 1



\*

**FUNNY BUNNIES\* | Midi | medium**

B170 x T092 x H225mm

Art.-Nr.: 70010 11710

EAN VE: 4068136 000086 (VE 10)



4 068136 000079

**SPRING TIME - Midi | medium**

B170 x T092 x H225mm

Art.-Nr.: 70010 11711

EAN VE: 4068136 000116 (VE 10)



4 068136 000109



## CANDY SHOP

Fröhliche Motive in sommerlichen Farben verbreiten Party-Laune.

Get ready to party with cheerful motives in summery colours.





Papier | Paper:

ca. 80g/m<sup>2</sup> | approx. 80gsm

Gestrichenes Geschenkpapier | Coated gift wrap



2m x 70cm

Pappeinlage | stiffener

Art.-Nr.: 33053 5A5277

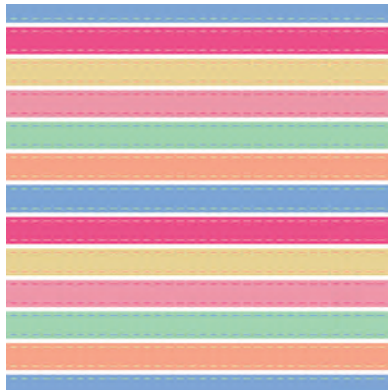
EAN VE: 4058653 201929 (VE 25)



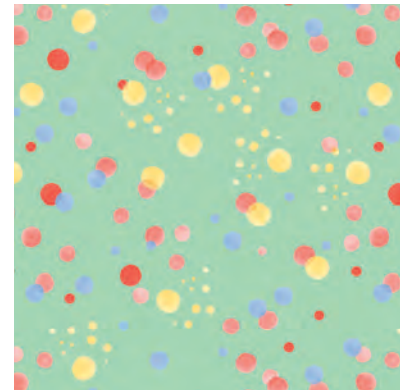
4 058653 101922



Design 5A.0857.2



Design 5A.0740.2



Design 5A.0622.2



Design 5A.1215.1



Design 5A.0661.2



## DREAM GREEN

Natürliche Motive in warmen Farben erzeugen pure Gelassenheit.

Natural motifs in warm colours create a natural sense of calm.







Papier | Paper:

ca. 70g/m<sup>2</sup> | approx. 70gsm

100% Altpapier | 100% recycled paper

100% Farben auf Wasserbasis | 100% water-based inks



2m x 70cm

Pappeinlage | stiffener

Art.-Nr.: 33053 525269

EAN VE: 4058653 201936 (VE 25)



4 058653 101939



[www.blauer-engel.de/uz14b](http://www.blauer-engel.de/uz14b)



**100% Folienfrei**  
(+ 10cm Papier extra)

**100% Foil-free**  
(+ 10cm paper extra)



Design 52.0958.2



Design 52.0707.2



Design 52.1214.1



Design 52.0660.2



Design 52.0705.1

## PALMS

### Taschen | Gift bags:

200g/m<sup>2</sup> | 200gsm | FSC®

Mattkaschierung, Kordel, Ösen  
Matt finish, cord, eyelets



### Maxi | large

B260 x T135 x H335mm

Art.-Nr.: 70010 12740

EAN VE: 4068136 002691 (VE 10)



4 068136 002684

### Midi | medium

B170 x T092 x H225mm

Art.-Nr.: 70010 11740

EAN VE: 4068136 002721 (VE 10)



4 068136 002714



## SOFT BUBBLES\*

### Taschen | Gift bags:

200g/m<sup>2</sup> | 200gsm

Mattkaschierung, Heißfolie,  
Satinband, Ösen  
Matt finish, hotfoil, satin ribbon,  
eyelets



### Flasche | bottle

B105 x T105 x H360mm

Art.-Nr.: 70010 13690

EAN VE: 4058652 137908 (VE 10)



4 058652 136901

### Maxi | large

B260 x T135 x H335mm

Art.-Nr.: 70010 12690

EAN VE: 4058652 127909 (VE 10)



4 058652 126902



## RETRO FLOWERS\*

### Taschen | Gift bags:

200g/m<sup>2</sup> | 200gsm

Mattkaschierung, Heißfolie,  
Satinband, Ösen  
Matt finish, hotfoil, satin ribbon,  
eyelets

PG | PC 2



★



### Maxi | large

B260 x T135 x H335mm

Art.-Nr.: 70010 12663

EAN VE: 4058652 127633 (VE 10)



4 058652 126636

## TENDER BUTTERFLIES

### Taschen | Gift bags:

190g/m<sup>2</sup> | 190gsm

Gestrichenes Papier, Heißfolie,  
Satinband  
Coated paper, hotfoil,  
satin ribbon



### Maxi | large

B260 x T140 x H360mm

Art.-Nr.: 70010 12645

EAN VE: 4058652 127459 (VE 10)



4 058652 126452

### Flasche | bottle

B110 x T100 x H380mm

Art.-Nr.: 70010 13645

EAN VE: 4058652 137458 (VE 10)



4 058652 136451

### Midi | medium

B180 x T100 x H230mm

Art.-Nr.: 70010 11645

EAN VE: 4058652 117450 (VE 10)



4 058652 116453

PG | PC 1





# CLASSIC

Klassische Motive in kräftigen Farben bereiten Freude beim Schenken.

Classic designs in vibrant colours make gift-giving fun.





Papier | Paper:  
 ca. 80g/m<sup>2</sup> | approx. 80gsm  
 Gestrichenes Geschenkpapier | Coated gift wrap



2m x 70cm  
 Pappeinlage | stiffener  
 Art.-Nr.: 33043 5A5217  
 EAN VE: 4058653 201257 (VE 50)



Design 5A.0719.2



Design 5A.0661.3



Design 5A.1216.1



Design 5A.0727.2



Design 3A.0361.1



Design 4A.0499.2



Design 5A.0857.3



Design 5A.1217.1

## BLUE BAG

Taschen | Gift bags:

200g/m<sup>2</sup> | 200gsm | FSC®

Mattkaschierung, Heißfolie, Kordel, Ösen  
Matt finish, hotfoil, cord, eyelets

PG | PC 2



Maxi | large

B260 x T135 x H335mm

Art.-Nr.: 70010 12742

EAN VE: 4068136 002813 (VE 10)



4 068136 002806

Midi | medium

B170 x T092 x H225mm

Art.-Nr.: 70010 11742

EAN VE: 4068136 002844 (VE 10)



4 068136 002837



## MIT EUCH | SUMMER STRIPES\*

Taschen | Gift bags:

200g/m<sup>2</sup> | 200gsm | FSC®

Mattkaschierung, Satinband, Ösen  
Matt finish, satin ribbon, eyelets

PG | PC 1



\*

MIT EUCH | Flasche | bottle

B105 x T105 x H360mm

Art.-Nr.: 70010 13692

EAN VE: 4058652 137922 (VE 10)



4 058652 136925

SUMMER STRIPES\* | Maxi | large

B260 x T135 x H335mm

Art.-Nr.: 70010 12718

EAN VE: 4068136 000628 (VE 10)



4 068136 000611



## SPLASH | SPLASH

Taschen | Gift bags:

200g/m<sup>2</sup> | 200gsm | FSC®

Mattkaschierung, Satinband, Ösen  
Matt finish, satin ribbon, eyelets

PG | PC 1



Maxi | large

B260 x T135 x H335mm

Art.-Nr.: 70010 12716

EAN VE: 4068136 000505 (VE 10)



4 068136 000499

Midi | medium

B170 x T092 x H225mm

Art.-Nr.: 70010 11716

EAN VE: 4068136 000475 (VE 10)



4 068136 000468

## JUST FOR YOU

Taschen | Gift bags:

200g/m<sup>2</sup> | 200gsm | FSC®

Mattkaschierung, Satinband, Ösen  
Matt finish, satin ribbon, eyelets

PG | PC 1



Maxi | large

B260 x T135 x H335mm

Art.-Nr.: 70010 12715

EAN VE: 4068136 000444 (VE 10)



4 068136 000437

Midi | medium

B170 x T092 x H225mm

Art.-Nr.: 70010 11715

EAN VE: 4068136 000413 (VE 10)



4 068136 000406

## DANKE

Taschen | Gift bags:

200g/m<sup>2</sup> | 200gsm | FSC®

Mattkaschierung, Kordel, Ösen  
Matt finish, cord, eyelets

PG | PC 1



Midi | medium

B170 x T092 x H225mm

Art.-Nr.: 70010 11746

EAN VE: 4068136 003179 (VE 10)



4 068136 003162

Flakon | flacon

B105 x T105 x H180mm

Art.-Nr.: 70010 10721

EAN VE: 4068136 003209 (VE 10)



4 068136 003193



VORDERSEITE | FRONT



RÜCKSEITE | BACK



## GOLDEN BALLOONS\*

Taschen | Gift bags:

160g/m<sup>2</sup> | 160gsm | FSC®

Kraftpapier braun, Glitter, Papierkordel  
Kraft paper brown, glitter, paper cord

PG | PC 2



\*

Flasche | bottle

B105 x T105 x H360mm

Art.-Nr.: 70010 13721

EAN VE: 4068136 000864 (VE 10)



4 068136 000857

Maxi | large

B260 x T135 x H335mm

Art.-Nr.: 70010 12721

EAN VE: 4068136 000833 (VE 10)



4 068136 000826

Midi | medium

B170 x T092 x H225mm

Art.-Nr.: 70010 11721

EAN VE: 4068136 000802 (VE 10)



4 068136 000796





## FLATBAGS "OH HAPPY DAY"

2er Set | set of 2 bags:

120g/m<sup>2</sup> | 120gsm | FSC®

Kraftpapier weiß, Klebepunkt zum Verschließen

Kraft paper white, adhesive dot for closing



Midi | medium

B150 x T065 x H280mm

Art.-Nr.: 70010 16018

EAN VE: 4068136 003148 (VE 10 Sets)



4 068136 003131

## BIRTHDAY PARTY

Taschen | Gift bags:

200g/m<sup>2</sup> | 200gsm

Kraftpapier schwarz, Heißfolie, Kordel, Ösen

Kraft paper black, hotfoil, cord, eyelets

Flasche | bottle

B105 x T105 x H360mm

Art.-Nr.: 70010 13691

EAN VE: 4058652 137915 (VE 10)



4 058652 136918

Maxi | large

B260 x T135 x H335mm

Art.-Nr.: 70010 12691

EAN VE: 4058652 127916 (VE 10)



4 058652 126919

Midi | medium

B170 x T092 x H225mm

Art.-Nr.: 70010 11691

EAN VE: 4058652 117917 (VE 10)



4 058652 116910



PG | PC 2



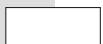
\*



## BABY

Liebevolle Motive in zarten Farben heißen die kleinen Lieblinge willkommen.

A world of lovingly designed motifs in soft colours welcome the little bundles of joy.





**Papier | Paper:**

ca. 80g/m<sup>2</sup> | approx. 80gsm

Gestrichenes Geschenkpapier  
Coated gift wrap



2m x 70cm

40mm Hülse | core

Art.-Nr.: 33073 3A3245

EAN VE: 4058653 200960 (VE 20)



4 058653 100963



Design 4A.0739.1



Design 5A.1221.1



Design 3A.0006.2

## SWEET BABY

**Taschen | Gift bags:**

200g/m<sup>2</sup> | 200gsm | FSC®

Mattkaschierung, Heißfolie,  
Kordel, Ösen  
Matt finish, hotfoil, cord,  
eyelets

PG | PC 2



**Maxi | large**

B260 x T135 x H335mm

Art.-Nr.: 70010 12741

EAN VE: 4068136 002752 (VE 10)



4 068136 002745

**Midi | medium**

B170 x T092 x H225mm

Art.-Nr.: 70010 11741

EAN VE: 4068136 002783 (VE 10)



4 068136 002776

## RAINBOW MOON

Taschen | Gift bags:

200g/m<sup>2</sup> | 200gsm | FSC®

Mattkaschierung, Satinband, Ösen  
Matt finish, satin ribbon, eyelets

PG | PC 1



Maxi | large

B260 x T135 x H335mm

Art.-Nr.: 70010 12713

EAN VE: 4068136 000321 (VE 10)



4 068136 000314

Midi | medium

B170 x T092 x H225mm

Art.-Nr.: 70010 11713

EAN VE: 4068136 000291 (VE 10)



4 068136 000284



VORDERSEITE | FRONT



RÜCKSEITE | BACK

## WELCOME LITTLE BABY

Taschen | Gift bags:

120g/m<sup>2</sup> | 120gsm

Recyclingpapier, Papierkordel  
Recycling paper, paper cord

PG | PC 2



Maxi | large

B240 x T090 x H320mm

Art.-Nr.: 70010 12699

EAN VE: 4058652 127992 (VE 10)



4 058652 126995

Midi | medium

B180 x T090 x H230mm

Art.-Nr.: 70010 11699

EAN VE: 4058652 117993 (VE 10)



4 058652 116996



## LITTLE ELEPHANT\*

Taschen | Gift bags:

200g/m<sup>2</sup> | 200gsm

Mattkaschierung, Heißfolie,  
Glitter, Kordel, Anhänger, Ösen  
Matt finish, hotfoil, glitter,  
cord, gift tag, eyelets

PG | PC 1



\*



Midi | medium

B170 x T092 x H225mm

Art.-Nr.: 70010 11609

EAN VE: 4058652 117092 (VE 10)



4 058652 116095

## BABY HAPPINESS\*

Taschen | Gift bags:

200g/m<sup>2</sup> | 200gsm

Mattkaschierung, Glitter, Satinband,  
Ösen

Matt finish, glitter, satin ribbon,  
eyelets

PG | PC 2



\*



Maxi | large

B260 x T135 x H335mm

Art.-Nr.: 70010 12688

EAN VE: 4058652 127886 (VE 10)



4 058652 126889



# BAMBINI

Lustige Designs und fröhliche Farben lassen Kinder-  
augen strahlen.

Fun designs and joyful colours make children's eyes  
light up.





Papier | Paper:

ca. 80g/m<sup>2</sup> | approx. 80gsm

Gestrichenes Geschenkpapier | Coated gift wrap



2m x 70cm

40mm Hülse | core

Art.-Nr.: 33013 5A5223

EAN VE: 4058653 201264 (VE 30)



4 058653 101267



Design 5A.1223.1



Design 5A.0626.2



Design 5A.1218.1



Design 3A.0011.1



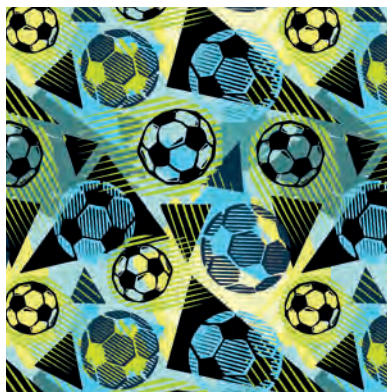
Design 3A.0364.1



Design 4A.0712.1



Design 4A.0720.1




Design 5A.1225.1

## FARM LIFE\*

Taschen | Gift bags:

200g/m<sup>2</sup> | 200gsm | FSC®

Mattkaschierung, Kordel, Ösen  
Matt finish, cord, eyelets

PG | PC 1  \*

Maxi | large

B260 x T135 x H335mm

Art.-Nr.: 70010 12714

EAN VE: 4068136 000383 (VE 10)



4 068136 000376

Midi | medium

B170 x T092 x H225mm

Art.-Nr.: 70010 11714

EAN VE: 4068136 000352 (VE 10)



4 068136 000345




## GAMING

Taschen | Gift bags:

200g/m<sup>2</sup> | 200gsm | FSC®

Mattkaschierung, Kordel, Ösen  
Matt finish, cord, eyelets

PG | PC 1 

Maxi | large

B260 x T135 x H335mm

Art.-Nr.: 70010 12717

EAN VE: 4068136 000567 (VE 10)



4 068136 000550

Midi | medium

B170 x T092 x H225mm

Art.-Nr.: 70010 11717

EAN VE: 4068136 000536 (VE 10)



4 068136 000529





## FAIRYLAND\*

Taschen | Gift bags:

200g/m<sup>2</sup> | 200gsm

Mattkaschierung, Glitter,  
Satinband  
Matt finish, glitter, satin ribbon

PG | PC 2



\*



Maxi | large

B260 x T135 x H335mm

Art.-Nr.: 70010 12684

EAN VE: 4058652 127848 (VE 10)



4 058652 12684 1

Midi | medium

B170 x T092 x H225mm

Art.-Nr.: 70010 11684

EAN VE: 4058652 117849 (VE 10)



4 058652 11684 2

## SPACE KIDS\*

Taschen | Gift bags:

200g/m<sup>2</sup> | 200gsm

Mattkaschierung, Satinband, Ösen  
Matt finish, satin ribbon, eyelets

PG | PC 1



\*



Maxi | large

B260 x T135 x H335mm

Art.-Nr.: 70010 12685

EAN VE: 4058652 127855 (VE 10)



4 058652 12685 8

Midi | medium

B170 x T092 x H225mm

Art.-Nr.: 70010 11685

EAN VE: 4058652 117856 (VE 10)



4 058652 11685 9

## LITTLE FAIRY

Taschen | Gift bags:

120g/m<sup>2</sup> | 120gsm

Recyclingpapier, Papierkordel  
Recycling paper, paper cord

PG | PC 2



Maxi | large

B240 x T090 x H320mm

Art.-Nr.: 70010 12697

EAN VE: 4058652 127978 (VE 10)



4 058652 126971

Midi | medium

B180 x T090 x H230mm

Art.-Nr.: 70010 11697

EAN VE: 4058652 117979 (VE 10)



4 058652 116972



## FUN TIME

Taschen | Gift bags:

120g/m<sup>2</sup> | 120gsm

Recyclingpapier, Papierkordel  
Recycling paper, paper cord

PG | PC 2



Maxi | large

B240 x T090 x H320mm

Art.-Nr.: 70010 12698

EAN VE: 4058652 127985 (VE 10)



4 058652 126988

Midi | medium

B180 x T090 x H230mm

Art.-Nr.: 70010 11698

EAN VE: 4058652 117986 (VE 10)



4 058652 116989





**Papier | Paper:**

ca. 80g/m<sup>2</sup> | approx. 80gsm

Gestrichenes Geschenkpapier  
Coated gift wrap



2m x 70cm

40mm Hülse | core

Art.-Nr.: 33073 5A5201

EAN VE: 4058653 201691 (VE 20)



4 058653 101694



Design 3A.0359.1

**Taschen | Gift bags:**

200g/m<sup>2</sup> | 200gsm

Mattkaschierung, Heißfolie,  
Satinband, Ösen  
Matt finish, hotfoil, satin ribbon,  
eyelets

**Maxi | large\***

B330 x T120 x H330mm

Art.-Nr.: 70010 12655

EAN VE: 4058652 127558 (VE 10)



4 058652 126551

**Midi | medium | FSC®**

B220 x T080 x H220mm

Art.-Nr.: 70010 11720

EAN VE: 4068136 000741 (VE 10)



4 068136 000734

**Mini | small | FSC®**

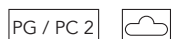
B150 x T055 x H150mm

Art.-Nr.: 70010 10720

EAN VE: 4068136 000710 (VE 10)



4 068136 000703



## BACK TO SCHOOL



Papier | Paper:

ca. 80g/m<sup>2</sup> | approx. 80gsm

Gestrichenes Geschenkpapier  
Coated gift wrap



2m x 70 cm

40mm Hülse | core

Art.-Nr.: 33073 4A4129

EAN VE: 4058653 200977 (VE 20)



4 058653 100970



Design 5A.1224.1



Design 0A.9095.1



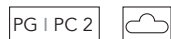
Design 4A.0760.1

## HAPPY SCHOOLING

Taschen | Gift bags:

210g/m<sup>2</sup> | 210gsm

Mattkaschierung, Satinband, Ösen  
Matt finish, satin ribbon, eyelets



Maxi | large

B260 x T135 x H335mm

Art.-Nr.: 70010 12667

EAN VE: 4058652 127671 (VE 10)



4 058652 126674

Midi | medium

B170 x T092 x H225mm

Art.-Nr.: 70010 11667

EAN VE: 4058652 117672 (VE 10)



4 058652 116675





Papier | Paper:

ca. 70g/m<sup>2</sup> | approx. 70gsm

100% Recyclingpapier  
100% recycled paper



2m x 70 cm

Pappeinlage | stiffener

Art.-Nr.: 33053 222241

EAN VE: 4058653 201707 (VE 25)



[www.blauer-engel.de/uz14b](http://www.blauer-engel.de/uz14b)

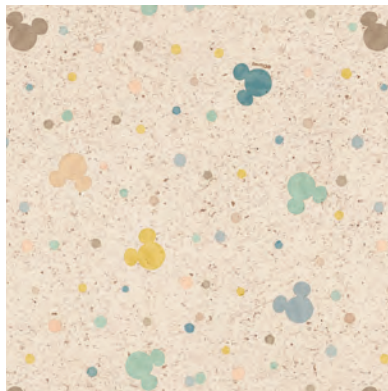


100% Folienfrei  
(+ 10cm Papier extra)

100% Foil-free  
(+ 10cm paper extra)



Design 22.9929.1



Design 22.9930.1

Disney  
**MICKEY**  
AND FRIENDS

Weitere Disney-Artikel finden Sie in  
unserem Disney-Prospekt.  
For further Disney articles please see our  
Disney leaflet.

DISNEY LETTERS | SIMPLY MICKEY

Taschen | Gift bags:

120g/m<sup>2</sup> | 120gsm

Recyclingpapier, Papierkordel  
Recycling paper, paper cord

PG | PC 2



Disney Letters | Maxi | large

B240 x T90 x H320mm

Art.-Nr.: 70010 12675

EAN VE: 4058652 127756 (VE 10)



Disney Letters | Midi | medium

B180 x T090 x H230mm

Art.-Nr.: 70010 11675

EAN VE: 4058652 117757 (VE 10)



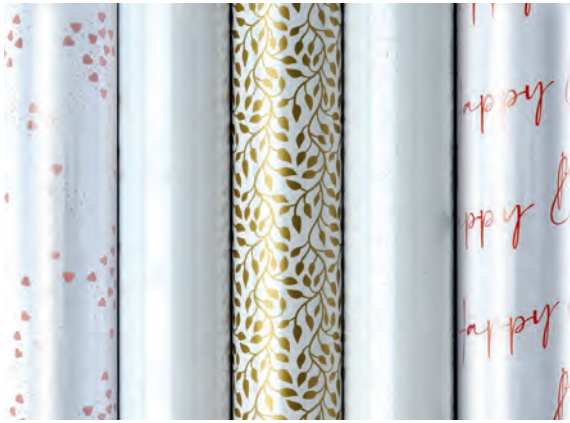
Simply Mickey | Midi | medium

B180 x T090 x H230mm

Art.-Nr.: 70010 11676

EAN VE: 4058652 117764 (VE 10)





Folie | film:

ca. 25µ | approx. 25µ

BOPP-Folie, transparent  
BOPP film, transparent



2,5m x 70cm

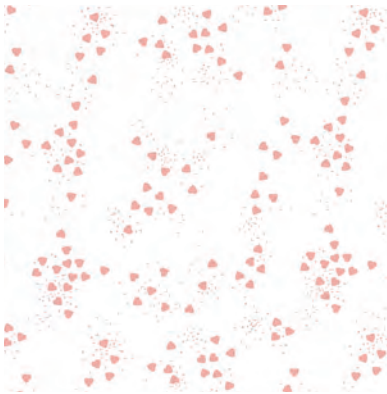
34mm Hülse | core

Art.-Nr.: 33084 787109

EAN VE: 4058653 200212 (VE 45)



4 058653 100215



Design 18.5983.2



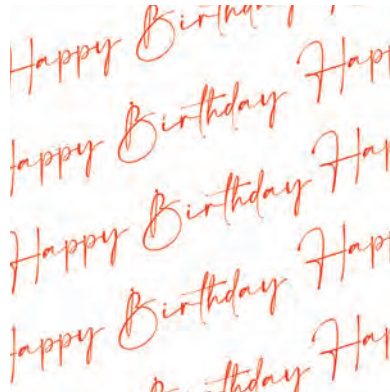
Design 78.7886



Design 58.1460

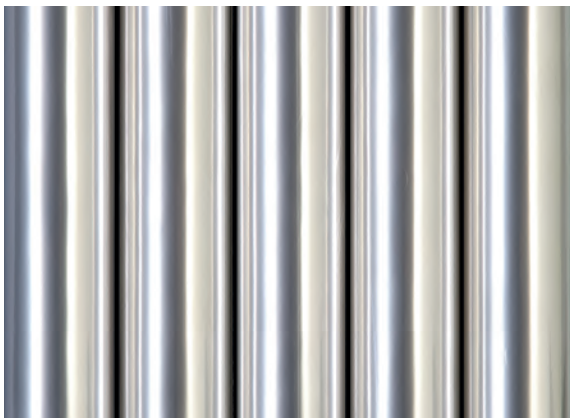


Design 38.1458



Design 38.9520.3

TRANSPARENT FILM



Folie | film:

ca. 25µ | approx. 25µ

BOPP-Folie, transparent, unbedruckt  
BOPP film, transparent, unprinted



5m x 70cm

34mm Hülse | core

Art.-Nr.: 33226 787000

EAN VE: 4058653 200038 (VE 50)



4 058653 100031



5m x 1m

Pappeinlage | stiffener

Art.-Nr.: 33246 989000

EAN VE: 4058653 201059 (VE 50)



4 058653 101052



Taschen | Gift bags :

200g/m<sup>2</sup> | 200gsm | FSC®

Kraftpapier, Heißfolie, Kordel  
Kraft paper, hotfoil, cord



Gold | gold

B120 x T090 x H390mm

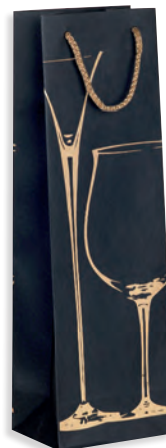
Art.-Nr.: 70030 33052

EAN VE: 4068136 000895 (VE 10)



4 068136 000888

ORNAMENTIC | GLASS OF WINE



Taschen | Gift bags :

200g/m<sup>2</sup> | 200gsm | FSC®

Kraftpapier, Heißfolie, Kordel  
Kraft paper, hotfoil, cord



ORNAMENTIC | Silber | silver

B120 x T090 x H390mm

Art.-Nr.: 70030 33050 (VE 10)



4 016795 330501

ORNAMENTIC | Gold | gold

B120 x T090 x H390mm

Art.-Nr.: 70030 33051 (VE 10)



4 016795 330518

GLASS OF WINE | Silber | silver

B120 x T090 x H390mm

Art.-Nr.: 70030 33043 (VE 10)



4 016795 330433

GLASS OF WINE | Gold | gold

B120 x T090 x H390mm

Art.-Nr.: 70030 33042 (VE 10)



4 016795 330426

TROPIC



Taschen | Gift bags:

150g/m<sup>2</sup> | Zuckerrohrpapier  
150gsm | Sugarcane paper

**Maxi | large**  
B220 x T100 x H310mm  
Art.-Nr.: 70010 12673  
EAN VE: 4058652 127732 (VE 10)



FLOWER GARDEN



Taschen | Gift bags:

150g/m<sup>2</sup> | Zuckerrohrpapier  
150gsm | Sugarcane paper

**Midi | medium**  
B180 x T080 x H240mm  
Art.-Nr.: 70010 11672  
EAN VE: 4058652 117726 (VE 10)



LEAF LINES



Taschen | Gift bags:

120g/m<sup>2</sup> | Recyclingpapier  
120gsm | Recycling paper

**Maxi | large**  
B240 x T090 x H320mm  
Art.-Nr.: 70010 12662  
EAN VE: 4058652 127626 (VE 10)



HAPPY BIRTHDAY



Taschen | Gift bags:

120g/m<sup>2</sup> | Recyclingpapier  
120gsm | Recycling paper

**Maxi | large**  
B240 x T90 x H320mm  
Art.-Nr.: 70010 12648  
EAN VE: 4058652 127480 (VE 10)



\* Nur in begrenzter Stückzahl verfügbar. Bitte fragen Sie an. | \* These items are available in limited quantities. Please inquire.



## MODERN ART



## Taschen | Gift bags:

120g/m<sup>2</sup> | Graspapier  
120gsm | Grass paper

## Maxi | large

B220 x T100 x H320mm

Art.-Nr.: 70010 12658

EAN VE: 4058652 127589 (VE 10)



4 058652 126582

## PURE ORGANIC



## Taschen | Gift bags:

120g/m<sup>2</sup> | Graspapier  
120gsm | Grass paper

## Maxi | large

B240 x T090 x H320mm

Art.-Nr.: 70010 12703

EAN VE: 4058652 128036 (VE 10)



4 058652 127039

## HERB GARDEN



## Taschen | Gift bags:

120g/m<sup>2</sup> | Graspapier  
120gsm | Grass paper

## Maxi | large

B220 x T100 x H320mm

Art.-Nr.: 70010 12656

EAN VE: 4058652 127565 (VE 10)



4 058652 126568

## AWAKING NATURE



## Taschen | Gift bags:

120g/m<sup>2</sup> | Graspapier  
120gsm | Grass paper

## Maxi | large

B220 x T100 x H320mm

Art.-Nr.: 70010 12650

EAN VE: 4058652 127503 (VE 10)



4 058652 126506

## Taschen | Gift bags:

ca. 190g/m<sup>2</sup> | approx. 190gsm



Gold | gold



**Maxi | large**  
B264 x T136 x H327mm  
Art.-Nr.: 70030 32165 (VE 10)



Blau | blue



**Maxi | large**  
B264 x T136 x H327mm  
Art.-Nr.: 70030 32172 (VE 10)



**Midi | medium**  
B180 x T100 x H227mm  
Art.-Nr.: 70030 31172 (VE 10)



Rot | red



**Maxi | large**  
B264 x T136 x H327mm  
Art.-Nr.: 70030 32169 (VE 10)



**Midi | medium**  
B180 x T100 x H227mm  
Art.-Nr.: 70030 31169 (VE 10)



Grün | green

**Flasche | bottle**  
B123 x T078 x H362mm  
Art.-Nr.: 70030 33167 (VE 10)



**Maxi | large**  
B264 x T136 x H327mm  
Art.-Nr.: 70030 32167 (VE 10)



**Midi | medium**  
B180 x T100 x H227mm  
Art.-Nr.: 70030 31167 (VE 10)



Silber | silver

**Flasche | bottle**  
B123 x T078 x H362mm  
Art.-Nr.: 70030 33166 (VE 10)



**Maxi | large**  
B264 x T136 x H327mm  
Art.-Nr.: 70030 32166 (VE 10)



**Midi | medium**  
B180 x T100 x H227mm  
Art.-Nr.: 70030 31166 (VE 10)



\* Nur in begrenzter Stückzahl verfügbar. Bitte fragen Sie an. | \* These items are available in limited quantities. Please inquire.

Taschen | Gift bags:

ca. 140g/m<sup>2</sup> | approx. 140gsm

SUMMER DOTS



Flasche | bottle

B105 x T105 x H360mm

Art.-Nr.: 70020 33434

EAN VE: 4068136 002998 (VE 10)



4



Maxi | large

B260 x T135 x H335mm

Art.-Nr.: 70020 32434

EAN VE: 4068136 003025 (VE 10)



4



Midi | medium

B170 x T092 x H225mm

Art.-Nr.: 70020 31434

EAN VE: 4068136 003056 (VE 10)



4

HAPPY FARM



JUST SMILE



HAPPY FARM | Maxi | large

B260 x T135 x H335mm

Art.-Nr.: 70010 12666

EAN VE: 4058652 127664 (VE 10)



4



JUST SMILE | Maxi | large

B260 x T135 x H335mm

Art.-Nr.: 70010 12686

EAN VE: 4058652 127862 (VE 10)



4

SEA BREEZE



Maxi | large

B330 x T120 x H330mm

Art.-Nr.: 70010 12530

EAN VE: 4058652 124304 (VE 10)



4

CHICKEN FARM



TULIP



CHICKEN FARM | Mini | small

B113 x T065 x H145mm

Art.-Nr.: 70020 30410

EAN VE: 4058652 303105 (VE 10)



4



TULIPS | Mini | small

B113 x T065 x H145mm

Art.-Nr.: 70020 30411

EAN VE: 4058652 303112 (VE 10)



4

## PRÄSENTA TASCHEN | BAGS\*

Taschen | Gift bags:

ca. 140g/m<sup>2</sup> | approx. 140gsm

### POLKA DOTS



POLKA DOTS | Mini | small  
B113 x T065 x H145mm  
Art.-Nr.: 70020 30123 (VE 10)  
EAN VE: 4016795 301235



### BUTTERFLIES



BUTTERFLIES | Mini | small  
B113 x T065 x H145mm  
Art.-Nr.: 70020 30408  
EAN VE: 4058652 303082 (VE 10)



### BABY BUNNY



BABY BUNNY | Mini | small  
B113 x T065 x H145mm  
Art.-Nr.: 70020 30412  
EAN VE: 4068136 002936 (VE 10)



### EASTER EGGS



EASTER EGGS | Mini | small  
B113 x T065 x H145mm  
Art.-Nr.: 70020 30413  
EAN VE: 4068136 002967 (VE 10)



### FLATBAGS "JUNGLE PARTY"



Taschen | Gift bags:

120g/m<sup>2</sup> | Kraftpapier weiß  
120gsm | Kraft paper white

Maxi | large

B180 x T085 x H335mm

Art.-Nr.: 70010 16010

EAN VE: 4058652 164102 (VE 10 Sets | sets)



2er Set | set of 2 bags

### FLATBAGS "JUNGLE PARTY"



Taschen | Gift bags:

120g/m<sup>2</sup> | Kraftpapier weiß  
120gsm | Kraft paper white

Midi | medium

B150 x T075 x H280mm

Art. Nr.: 70010 16009

EAN-VE:4058652 164096 (VE 10 Sets | sets)



2er Set | set of 2 bags

\* Nur in begrenzter Stückzahl verfügbar. Bitte fragen Sie an. | \* These items are available in limited quantities. Please inquire.

Taschen | Gift bags:

ca. 140g/m<sup>2</sup> | approx. 140gsm

PARTY DOTS - FLASCHE | BOTTLE



 DOTS GREEN | Flasche | bottle  
B105 x T105 x H360mm  
Art.-Nr.: 70020 33423  
EAN VE: 4068136 002875 (VE 10)



 DOTS PINK | Flasche | bottle  
B105 x T105 x H360mm  
Art.-Nr.: 70020 334424  
EAN VE: 4068136 002905 (VE 10)



HAPPY BIRTHDAY - FLASCHE | BOTTLE



 Flasche | bottle  
B105 x T105 x H360mm  
Art.-Nr.: 70020 36410  
EAN VE: 4058652 363109 (VE 10 Sets | sets)




nur auf Umverpackung | only on outer wrap, not on product

3er Set | set of 3 bags

PARTY DOTS - MAXI | LARGE



 Maxi | large  
B260 x T135 x H335mm  
Art.-Nr.: 70020 36412  
EAN: 4058652 363123 (VE 10 Sets | sets)



nur auf Umverpackung | only on outer wrap, not on product

3er Set | set of 3 bags

PARTY DOTS - FLASCHE | BOTTLE



 Flasche | bottle  
B105 x T105 x H360mm  
Art.-Nr.: 70020 36413  
EAN: 4058652 363130 (VE 10 Sets | sets)



nur auf Umverpackung | only on outer wrap, not on product

3er Set | set of 3 bags

\* Nur in begrenzter Stückzahl verfügbar. Bitte fragen Sie an. | \* These items are available in limited quantities. Please inquire.



## GREEN NATURE

Papier | Paper:  
ca. 70g/m<sup>2</sup> | approx. 70gsm

Silchiepapier  
(70% Altpapier + 30% Silphie)  
Silphie paper  
(70% recycled paper + 30% silphie)



100% Folienfrei  
(+ 10cm Papier extra)

100% Foil-free  
(+ 10cm paper extra)

1,5m x 70cm  
Pappeinlage | stiffener  
Art.-Nr.: 33053 545213  
EAN VE: 4058653 201943 (VE 25)



## AWAKING NATURE

Papier | Paper:  
ca. 70g/m<sup>2</sup> | approx. 70gsm

Graspapier  
(70% Recyclingpapier + 30% Gras)  
Grass paper  
(70% recycled paper + 30% Grass)



100% Folienfrei  
(+ 10cm Papier extra)

100% Foil-free  
(+ 10cm paper extra)

1,5m x 70cm  
Pappeinlage | stiffener  
Art.-Nr.: 33053 545213  
EAN VE: 4058653 201660 (VE 25)



## PURE NATURE

Papier | Paper:  
ca. 70g/m<sup>2</sup> | approx. 70gsm<sup>2</sup>

100% Altpapier  
100% Farben auf Wasserbasis

100% recycled paper  
100% water-soluble inks



100% Folienfrei  
(+ 10cm Papier extra)

100% Foil-free  
(+ 10cm paper extra)

2m x 70cm  
Pappeinlage | stiffener  
Art.-Nr.: 33053 525219  
EAN VE: 4058653 201615 (VE 25)



[www.blauer-engel.de/uz14b](http://www.blauer-engel.de/uz14b)



## URBAN NATURE

Papier | Paper:  
ca. 60g/m<sup>2</sup> | approx. 60gsm

Recyclingpapier braun  
Recycled paper brown



100% Folienfrei  
(+ 10cm Papier extra)

100% Foil-free  
(+ 10cm paper extra)

2m x 70cm  
Pappeinlage | stiffener  
Art.-Nr.: 33053 535205  
EAN VE: 4058653 201622 (VE 25)





## KRAFT BROWN

Papier | Paper:

ca. 60g/m<sup>2</sup> | approx. 60gsm

Recyclingpapier braun  
Recycled paper brown

5m x 70cm

Art.-Nr.: 33246 797163

EAN VE: 4058653 200281 (VE 50)



5m x 1m

Art.-Nr.: 33246 595173

EAN VE: 4058653 201967 (VE 25)



## ECO FUN

Papier | Paper:

ca. 80g/m<sup>2</sup> | approx. 80gsm

Recyclingpapier braun,  
Schaumbeflockung  
Recycled paper brown, foam flock



1,5m x 70cm

34mm Hülse | core

Art.-Nr.: 33052 131115

EAN VE: 4058653 201066 (VE 25)



Beispielabbildung  
Sample image



## RAINBOW

Papier | Paper:

ca. 60g/m<sup>2</sup> | approx. 60gsm<sup>2</sup>

Kraftpapier braun, Heißfolie, Prägung  
Kraft paper brown, hotfoil, embossing

1,5m x 70cm

34mm Hülse | core

Art.-Nr.: 33062 989101

EAN VE: 4058653 200984 (VE 25)



## 2-COLOR

Papier | Paper:

ca. 60g/m<sup>2</sup> | approx. 60gsm

Kraftpapier weiß, gerippt, beidseitig bedruckt,  
umgelegte Ecke

Kraft paper white, ribbed, double side print,  
folded corner shows colour on reverse

Frühling | Spring

2m x 70cm

Pappeinlage | stifferer

Art.-Nr.: 33753 838107

EAN VE: 4058653 200649 (VE 25)





## FOIL FINESSE

Papier | Paper:

ca. 80g/m<sup>2</sup> | approx. 80gsm

Gestrichenes Geschenkpapier, Heißfolie  
Coated gift wrap, hotfoil



1,5m x 70cm  
40mm Hülse | core  
Art.-Nr.: 33013 5A5103  
EAN VE: 4058653 201974 (VE 30)



## TOUCH OF GOLD

Papier | Paper:

ca. 80g/m<sup>2</sup> | approx. 80gsm

Recyclingpapier, Metallic-Relieffarbe  
Recycled paper, metallic relief color



1,5m x 70cm  
34mm Hülse | core  
Art.-Nr.: 33052 303253  
EAN VE: 4058653 201653 (VE 25)



[www.blauer-engel.de/uz14b](http://www.blauer-engel.de/uz14b)



## SHIMMERING PEARLS

Papier | Paper:

ca. 80g/m<sup>2</sup> | approx. 80gsm

Recyclingpapier, Pearl-Glimmer  
Recycled paper, pearl glimmer



1,5m x 70cm  
34mm Hülse | core  
Art.-Nr.: 33053 171171  
EAN VE: 4058653 201486 (VE 25)



[www.blauer-engel.de/uz14b](http://www.blauer-engel.de/uz14b)



## ALL ABOUT LOVE

Papier | Paper:

ca. 75g/m<sup>2</sup> | approx. 75gsm

Kraftpapier weiß, Heißfolie, Prägung  
Kraft paper white, hotfoil, embossing

1,5m x 70cm  
34mm Hülse | core  
Art.-Nr.: 33572 404135  
EAN VE: 4058653 200595 (VE 20)



Beispielabbildung  
Sample image





## FOR SPECIAL MOMENTS

Papier | Paper:

ca. 80g/m<sup>2</sup> | approx. 80gsm

Gestrichenes Geschenkpapier  
Coated gift wrap

2m x 70cm

40mm Hülse | core

Art.-Nr.: 33073 3A3243

EAN VE: 4058653 201325 (VE 20)



## PRIMAVERA

Papier | Paper:

ca. 80g/m<sup>2</sup> | approx. 80gsm

Gestrichenes Geschenkpapier  
Coated gift wrap

2m x 70cm

40mm Hülse | core

Art.-Nr.: 33073 5A5225

EAN VE: 4058653 200953 (VE 20)



## CANDY SHOP

Papier | Paper:

ca. 80g/m<sup>2</sup> | approx. 80gsm

Gestrichenes Geschenkpapier  
Coated gift wrap

2m x 70cm

Pappeinlage | stiffener

Art.-Nr.: 33053 5A5277

EAN VE: 4058653 201929 (VE 25)



## DREAM GREEN

Papier | Paper:

ca. 70g/m<sup>2</sup> | approx. 70gsm<sup>2</sup>

100% Altpapier  
100% Farben auf Wasserbasis

100% recycled paper  
100% water-soluble inks



100% Folienfrei  
(+ 10cm Papier extra)

100% Foil-free  
(+ 10cm paper extra)

2m x 70cm

Pappeinlage | stiffener

Art.-Nr.: 33053 525269

EAN VE: 4058653 201936 (VE 25)



[www.blauer-engel.de/uz14b](http://www.blauer-engel.de/uz14b)



## CLASSIC

Papier | Paper:  
ca. 80g/m<sup>2</sup> | approx. 80gsm  
Gestrichenes Geschenkpapier  
Coated gift wrap

2m x 70cm  
Pappeinlage | stiffener  
Art.-Nr.: 33043 5A5217  
EAN VE: 4058653 201257 (VE 50)



4 058653 101250



## BABY

Papier | Paper:  
ca. 80g/m<sup>2</sup> | approx. 80gsm  
Gestrichenes Geschenkpapier  
Coated gift wrap

2m x 70cm  
40mm Hülse | core  
Art.-Nr.: 33073 3A3245  
EAN VE: 4058653 200960 (VE 20)



4 058653 100963



## BAMBINI

Papier | Paper:  
ca. 80g/m<sup>2</sup> | approx. 80gsm  
Gestrichenes Geschenkpapier  
Coated gift wrap

2m x 70cm  
40mm Hülse | core  
Art.-Nr.: 33013 5A5223  
EAN VE: 4058653 201264 (VE 30)



4 058653 101267



## KOMMUNION | KONFIRMATION

Papier | Paper:  
ca. 80g/m<sup>2</sup> | approx. 80gsm  
Gestrichenes Geschenkpapier  
Coated gift wrap

2m x 70cm  
40mm Hülse | core  
Art.-Nr.: 33073 5A5201  
EAN VE: 4058653 201691 (VE 20)



4 058653 101694



## BACK TO SCHOOL

Papier | Paper:

ca. 80g/m<sup>2</sup> | approx. 80gsm

Gestrichenes Geschenkpapier  
Coated gift wrap

2m x 70 cm

40mm Hülse | core

Art.-Nr.: 33073 4A4129

EAN VE: 4058653 200977 (VE 20)



## DISNEY SCHOOL

Papier | Paper:

ca. 70g/m<sup>2</sup> | approx. 70gsm

100% Recyclingpapier  
100% recycled paper



100% Folienfrei  
(+ 10cm Papier extra)

100% Foil-free  
(+ 10cm paper extra)

2m x 70 cm

Pappeinlage | stiffener

Art.-Nr.: 33053 222241

EAN VE: 4058653 201707 (VE 25)



Disney  
**MICKEY**  
AND FRIENDS



[www.blauer-engel.de/uz14b](http://www.blauer-engel.de/uz14b)



## PRISMA

Folie | Film:

ca. 25my | approx. 25my

BOPP-Folie, transparent  
BOPP film, transparent

2,5m x 70cm

34mm Hülse | core

Art.-Nr.: 33084 787109

EAN VE: 4058653 200212 (VE 45)



## TRANSPARENT FILM

Folie | film:

ca. 25my | approx. 25my

BOPP-Folie, transparent  
BOPP film, transparent

5m x 70cm

34mm Hülse | core

Art.-Nr.: 33226 787000

EAN VE: 4058653 200038 (VE 50)



5m x 100cm

Pappeinlage | stiffener

Art.-Nr.: 33246 989000

EAN VE: 4058653 201059 (VE 50)





PRÄSENTA BLUMEN | FLOWERS

2m x 70cm  
 Pappeinlage | stiffener  
 Art.-Nr.: 33K03 656143  
 EAN VE: 4005264 293003 (VE 60)



PRÄSENTA 2M

2m x 70cm  
 Pappeinlage | stiffener  
 Art.-Nr.: 33003 555221  
 EAN VE: 4058653 200045 (VE 60)



PRÄSENTA 5M

5m x 70cm  
 Pappeinlage | stiffener  
 Art.-Nr.: 33046 555227  
 EAN VE: 4058653 200069 (VE 50)



PRÄSENTA BAMBINI

2m x 70cm  
 Pappeinlage | stiffener  
 Art.-Nr.: 33003 555223  
 EAN VE: 4058653 200052 (VE 60)





PRÄSENTA UNI

2m x 70cm  
 Pappeinlage | stiffener  
 Art.-Nr.: 33K03 656129  
 EAN VE: 4005264 294031 (VE 60)



DISPLAYS | DISPLAY EQUIPMENTS



ROLLENPLATZIERUNG TREPPE - fahrbar  
 Stepped rollwrap display on castors

Breite | width: 67cm  
 Höhe | height: 160cm

Art.-Nr. 70806 6501

Beispielabbildungen | Produkte ohne Inhalt  
 Sample images | Products without content



### PAPPDISPLAY | CARDBOARD DISPLAY

Pappdisplay zur Aufnahme verschiedener Kombinationen von Geschenkpapierrollen und Geschenktaschen.

Flexible cardboard display to hold various combinations of rollwrap and giftbags.

Breite | width: 60cm

Höhe | height : 151cm

Gerne unterstützen wir Sie bei der individuellen Bestückung.

All displays are supplied empty to allow you to make your own selection from our bags and giftwrap.

Beispielabbildungen | Produkte ohne Inhalt  
Sample images | Products without content





Zöllner-Wiethoff GmbH  
Röntgenstraße 3  
D - 96465 Neustadt | Coburg  
Germany · Allemagne

Telefon: +49 (0) 9568 1849-0  
Telefax: +49 (0) 9568 1849-49

[www.zoewie.com](http://www.zoewie.com)  
[zoewie@zoewie.com](mailto:zoewie@zoewie.com)